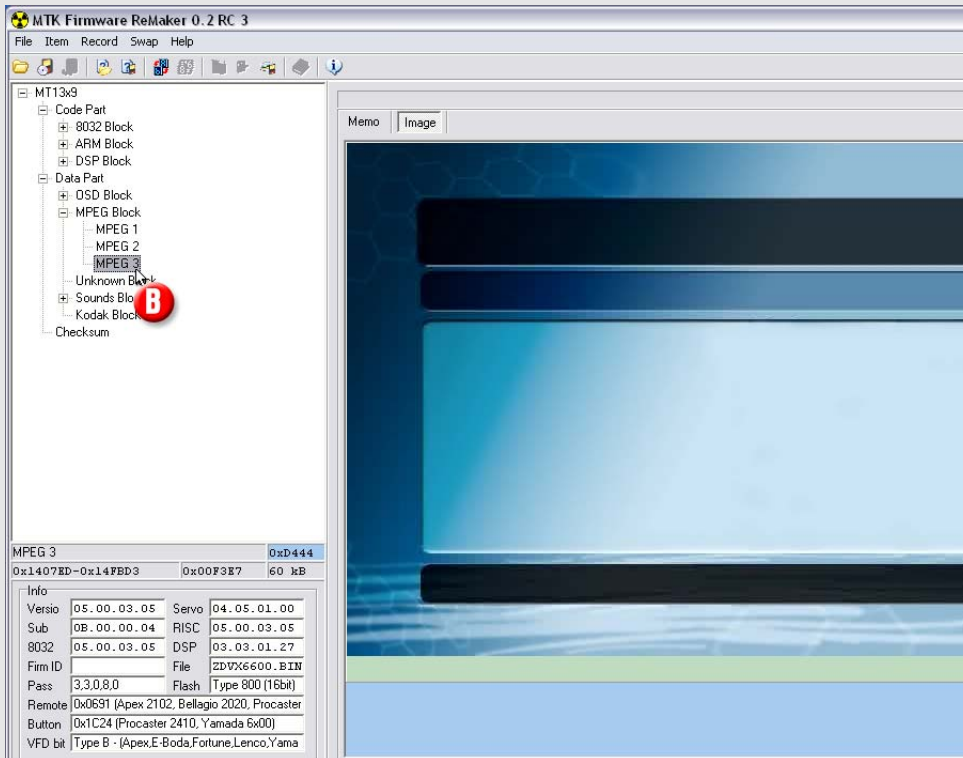


Tutorial: Changing Backgrounds

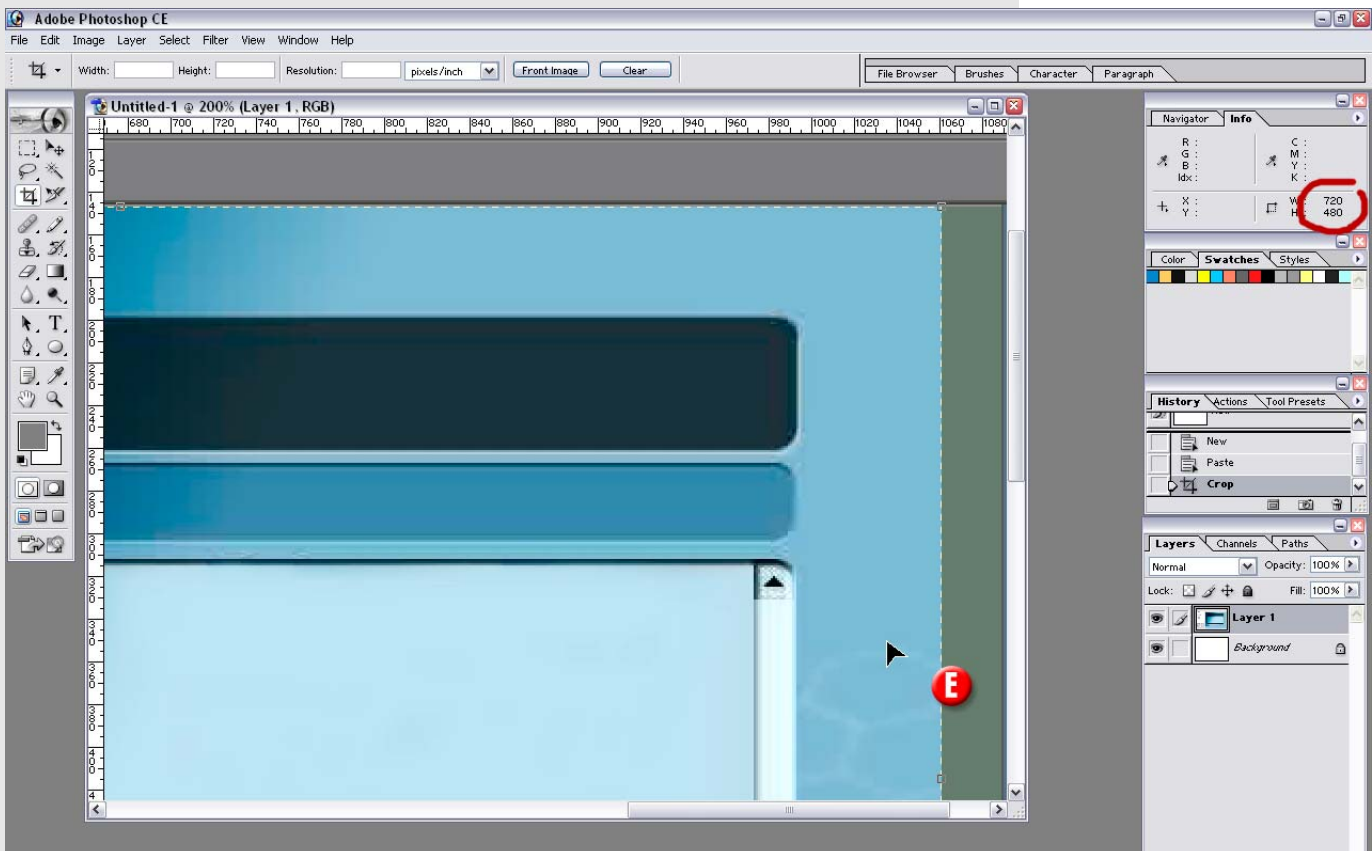


Tools needed:

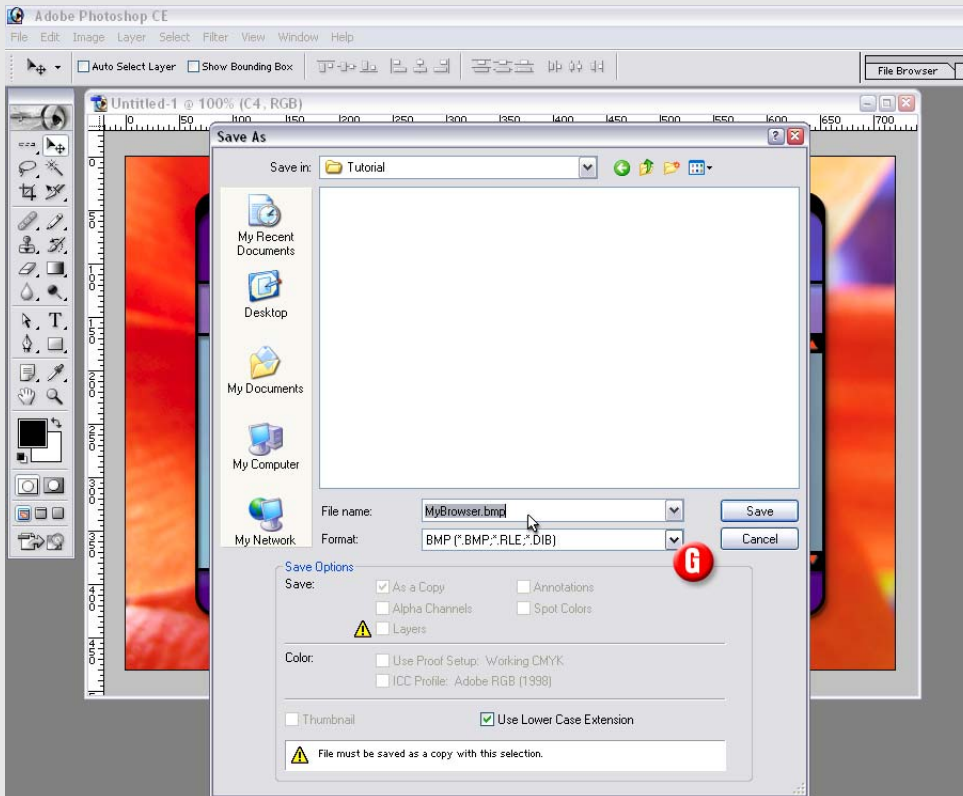
MTKRemaker 0.2 RC3
MTKMpegTool 01b1
PhotoShop

Open MTKRemaker and PhotoShop

- Open firmware to modify
- Locate the background
- Make a screenshot [PrintScreen]
- Paste it into a new PhotoShop file [File] [New] [OK] [Edit] [Paste]
- Crop the background. Use Crop Tool, and watch the final size on the right. This should be either 720x576 (PAL) or 720x480 (NTSC). When the selection is OK double click inside to apply Crop.



Tutorial: Changing Backgrounds



F. Design your own background.
Use the pasted original as a
template for window sizes.
Save your artwork as PSD file
for later modifications.

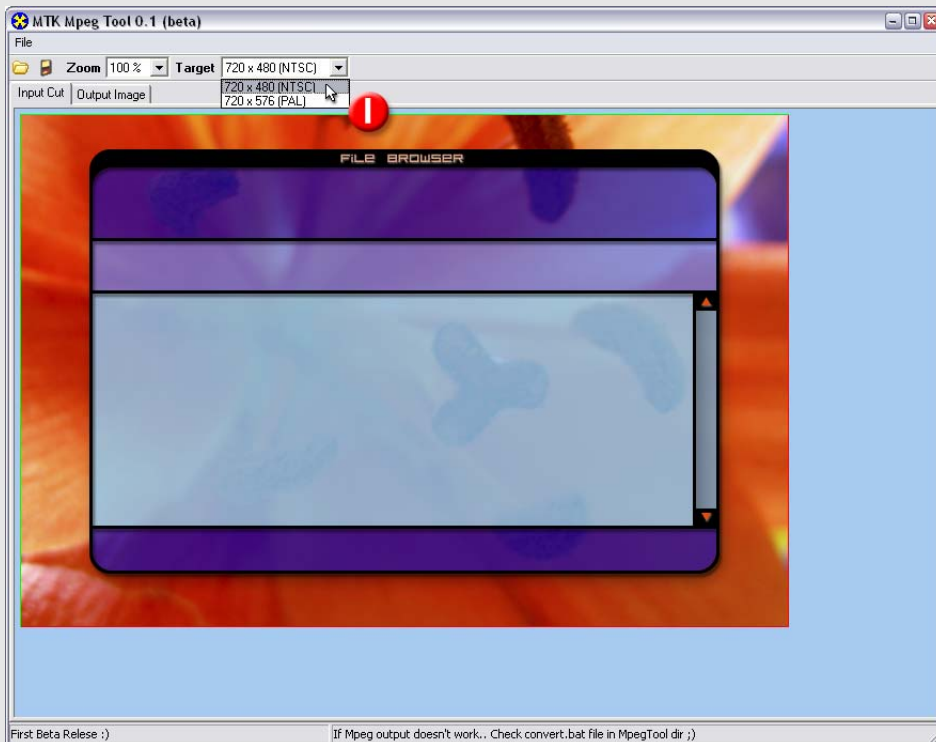
G. Save a copy in BMP format.
[File] [Save As...]

Open MTKMpegTool

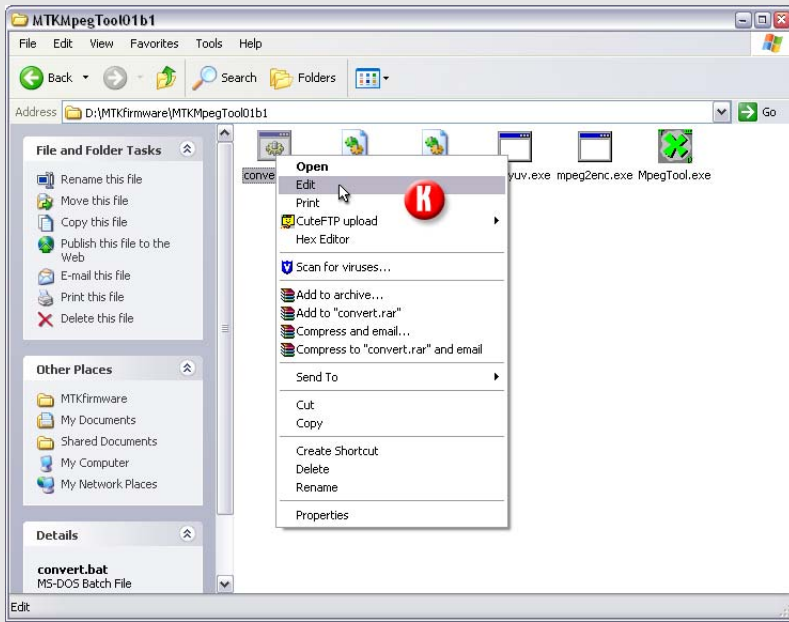
H. Open the BMP file (first icon)

I. Choose the correct format

J. Save MPEG file (the other
icon)

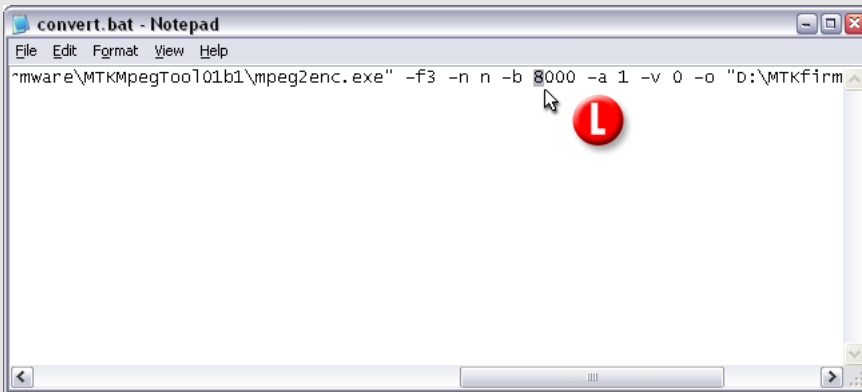


Tutorial: Changing Backgrounds



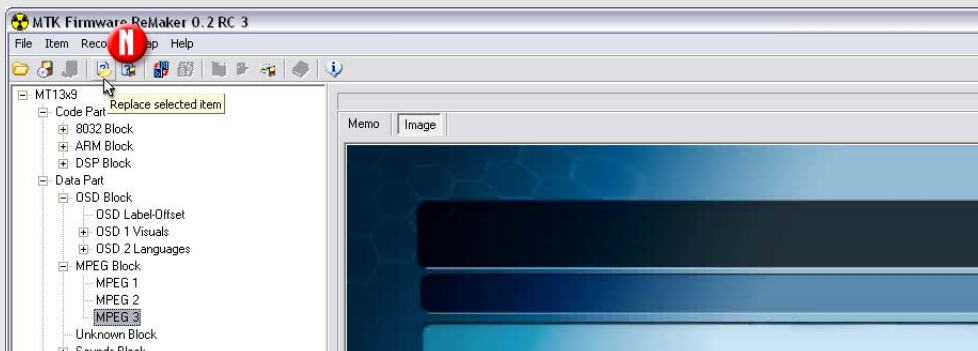
Locate „convert.bat“ in MTKMpegTool's folder

- K. Edit „convert.bat“ with a text-editor (NotePad)
- L. Replace the „-b 1000“ switch with a higher value. It stands for bitrate. The higher the number the better the quality. Use about „-b 8000“ for 2 Mbit eprom players, and about „-b 2500“ for 1 Mbit ones. The resulting MPEG should not be much bigger than the original was. (Use right-click [Save] in MTKRemaker to check the size of the original MPEG.)
- M. Run the „convert.bat“ again by double clicking on it.



Switch back to MTKRemaker

- N. Locate picture and click replace icon.
- O. Open the MPEG file you've created
- P. When all the modifications done click the [Save CD] icon. Save the modified firmware into a new directory to keep the original one. Do not change the name of the firmware because the player won't recognize it.



Attention!

Do all firmware modifications at your own risk!

